



Managing mHealth

Martin Weiss



science & technology

Department:
Science and Technology
REPUBLIC OF SOUTH AFRICA

Johnson & Johnson



METROPOLITAN HEALTH



Collaborating Centre for Digital Health Innovation

jembi health systems NPC

- Jembi Health Systems NPC
- The problem with mHealth
- Jembi and mHealth
- How mHealth can be transformative
- An mHealth framework for public health
- Conclusion and questions



Jembi Health Systems NPC

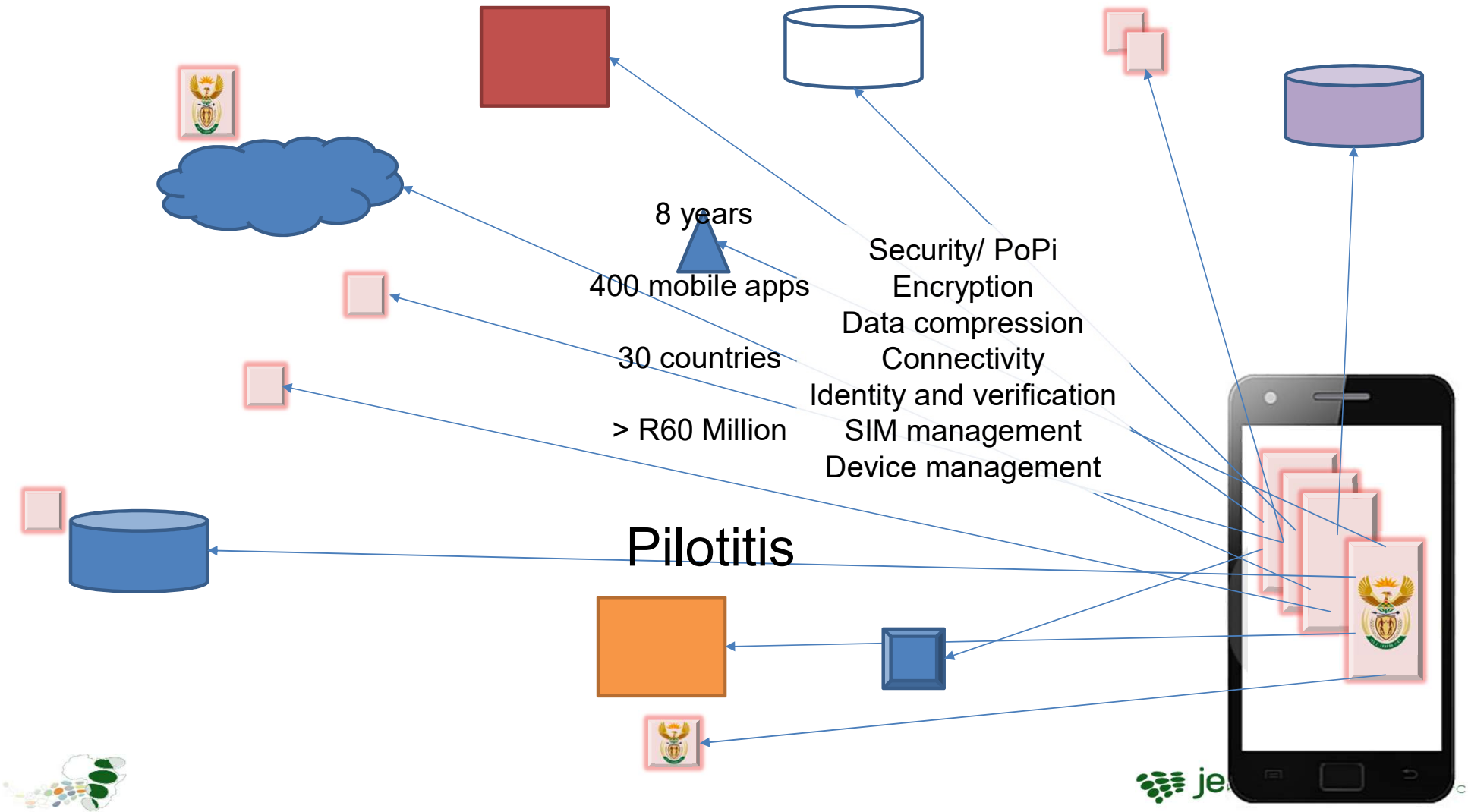
- Jembi Health Systems NPC originally started as a project within the MRC by Dr. Chris Seebregts and spun out as a private non-profit company in 2007



- March 2018 - established Jembi – SAMRC Collaborating Centre for Digital Health Innovation for initial period of three years
 - Aim is to promote, enable and support digital health innovation
 - First project is mHealth Framework for public health - HealthConnect

Jembi  Collaborating Centre for Digital Health Innovation

There's an app for that

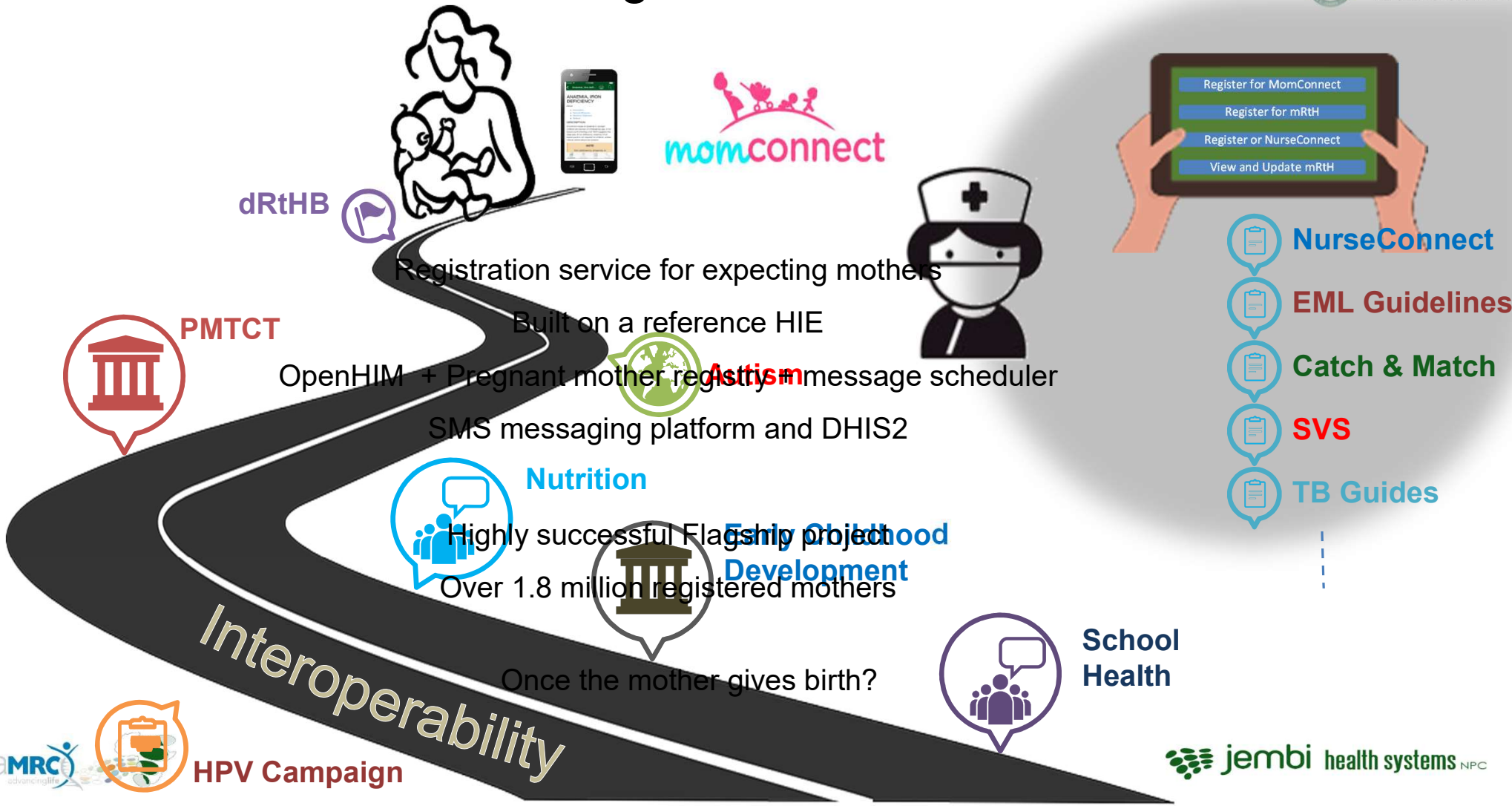


What we are currently trying to solve through HealthConnect

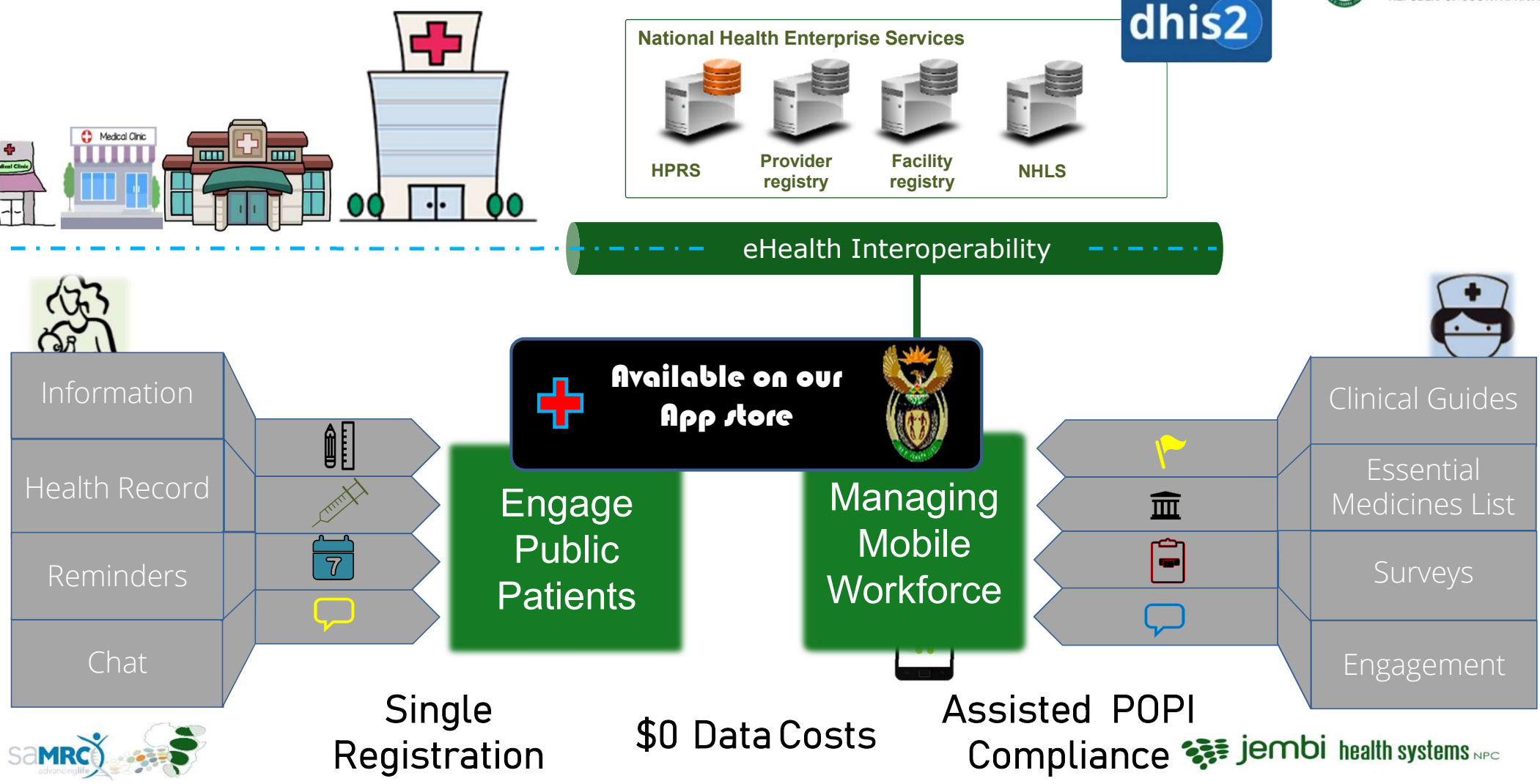
1. **Cost of engaging with patients and of managing** Community Health Workers
2. **Uncontrolled proliferation of mhealth apps**, fragmentation and inability to extract value.
3. **Sustainability**



How mHealth is transforming MomConnect

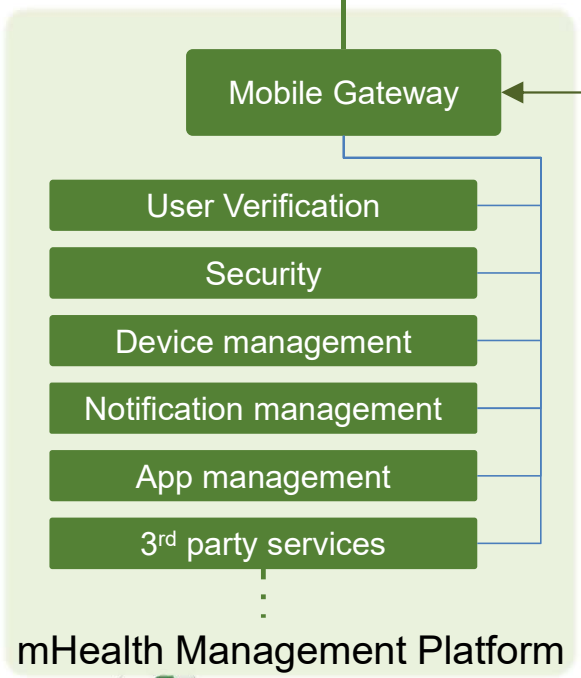
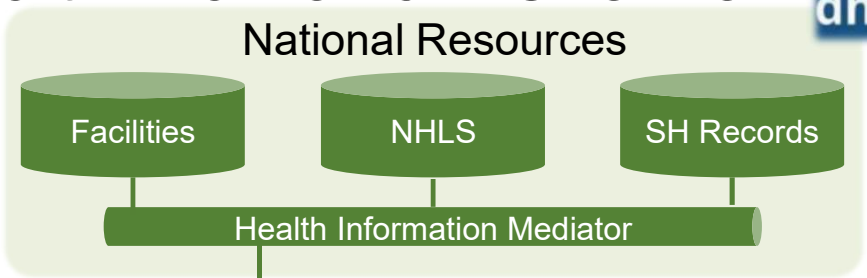


mHealth Framework Overview

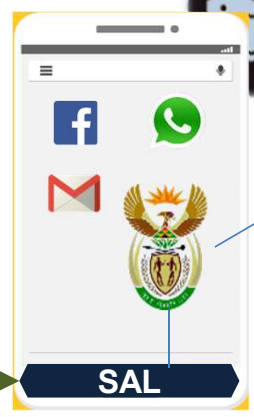


mHealth Framework Overview

dhis2



Single
Registration



\$0 Data Costs
for CHW



Curated Onboarding of Applications

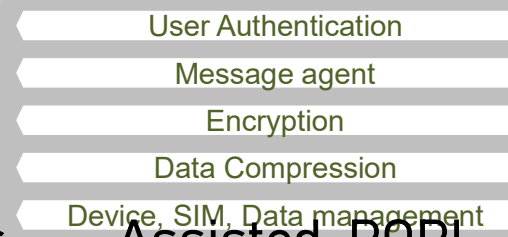
Campaign and data Analytics

Shared Information

Standards Based

Open Source

Register




Assisted POPI
Compliance

Clinical Repositories



Shared Health record TIER.net

Demographic Repositories



HPRS Provider registry Facility registry

Laboratory Services



NHLS



eHealth Interoperability



Mobile Application Gateway

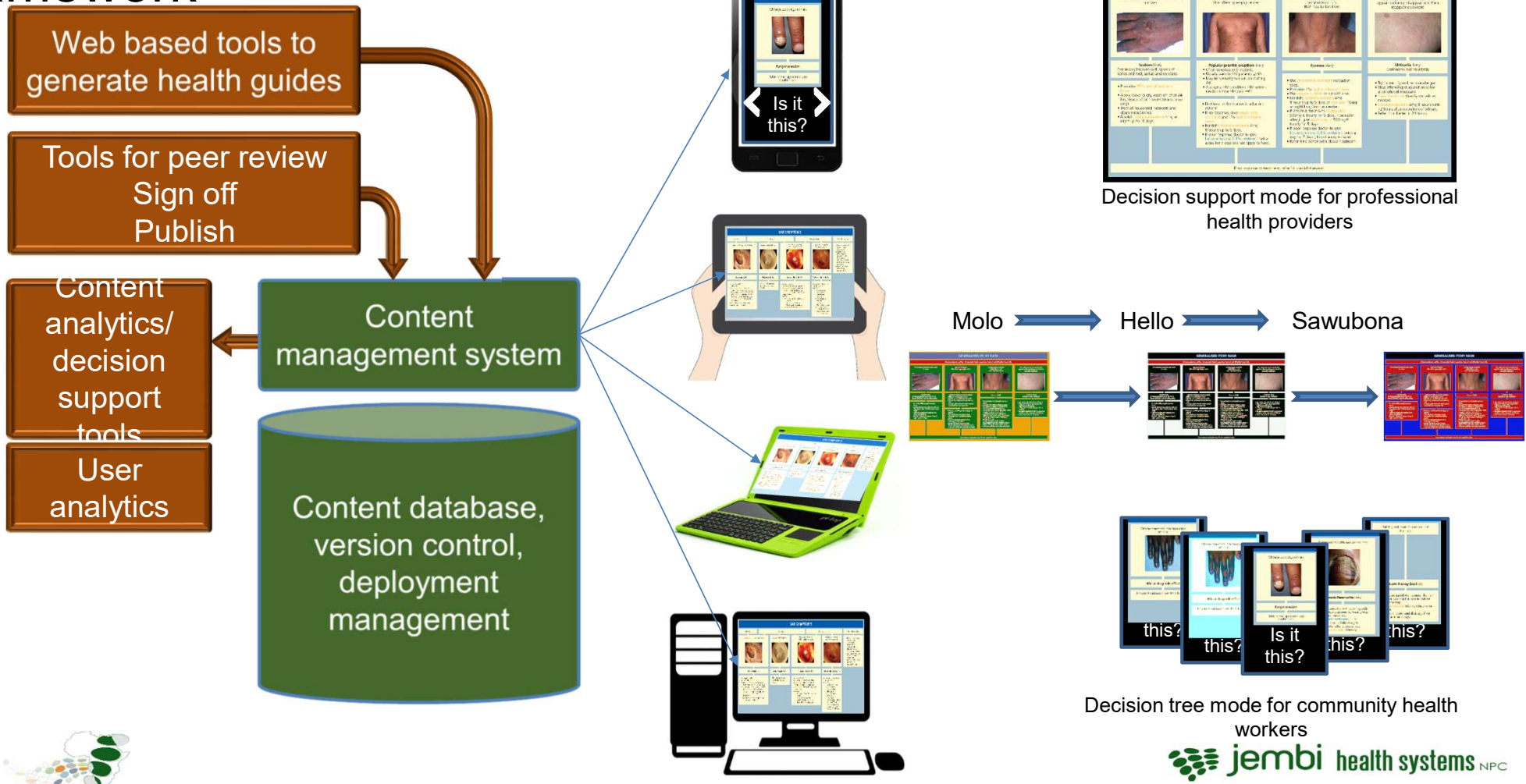
Mobile management

- User Verification
- Security
- Device management
- Notification management
- App management
- 3rd party services

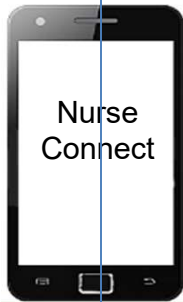
mHealth Management Servers



Advanced Clinical Care Content Management Framework



June 2018

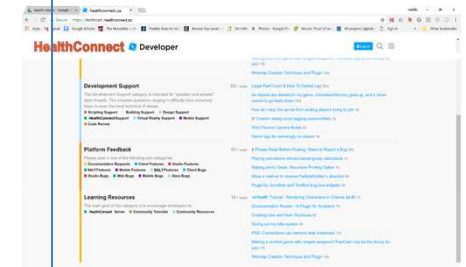


Free user downloads

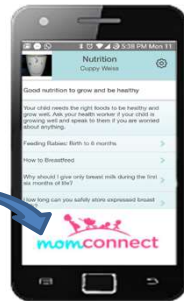
June 2019



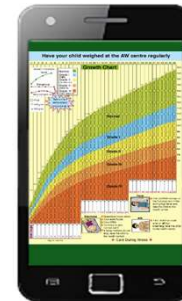
Sept 2019



App developers portal



DRtHB to include MomConnect messages (not SMS based)

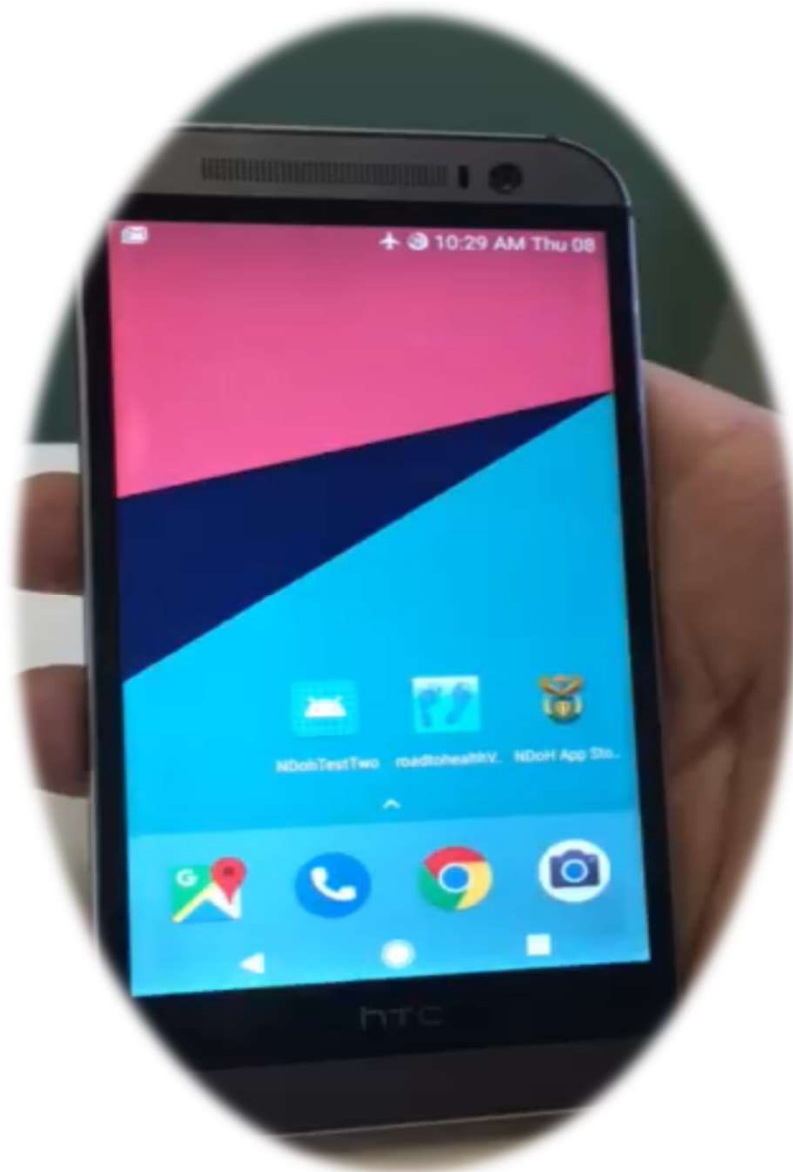


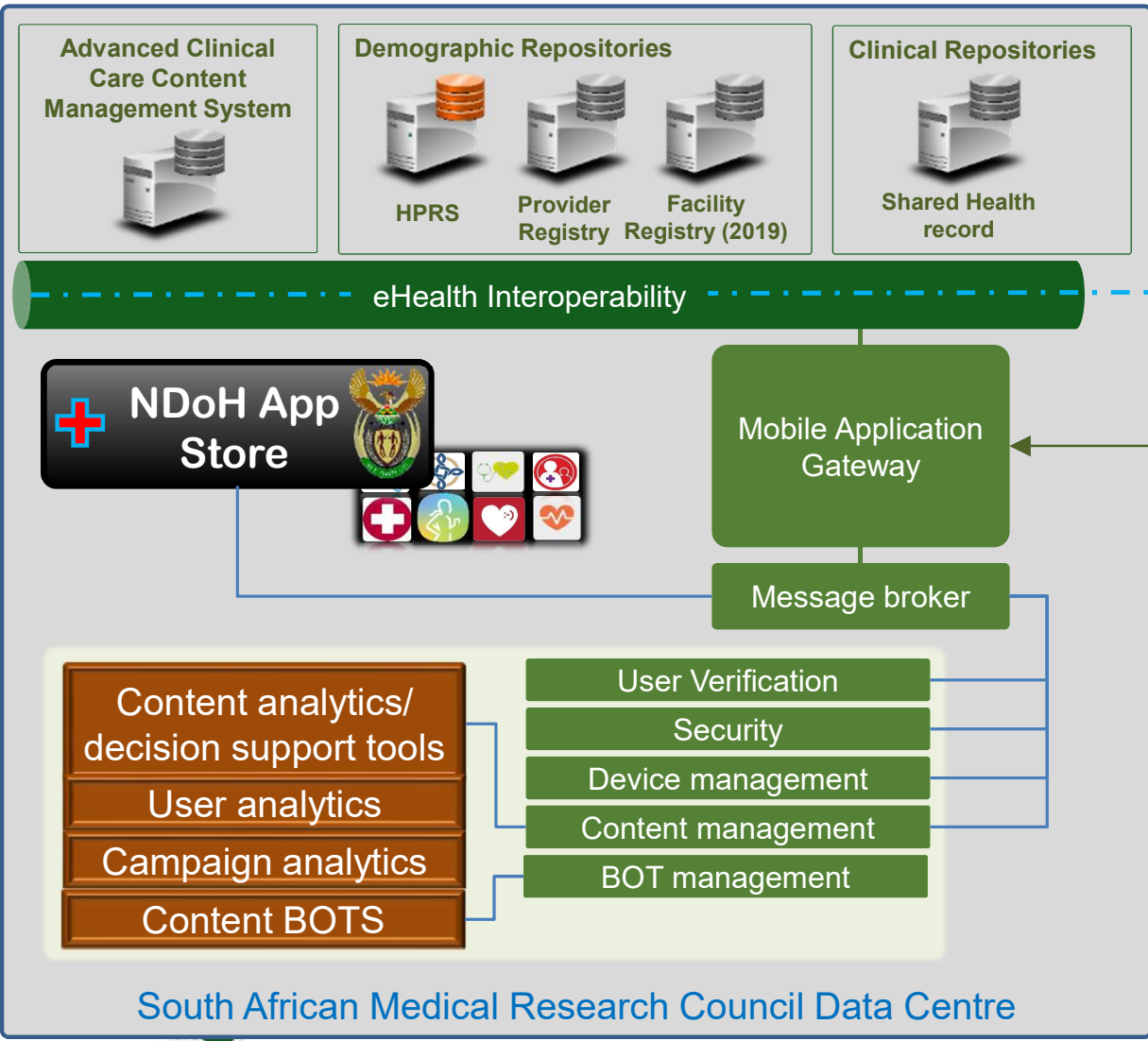
DRtHB including Interactive Growth Charts & Immunization History And...



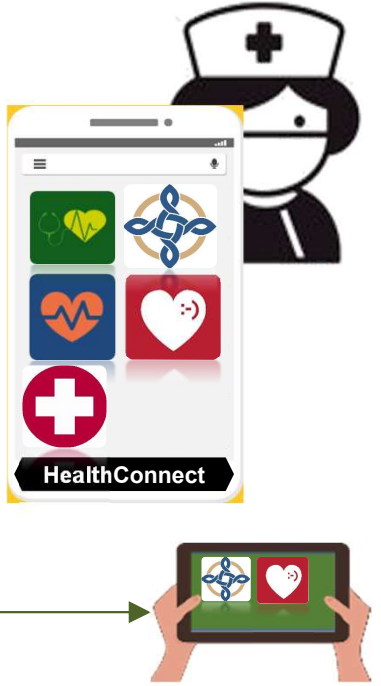
SMS







dhis2



Cost Savings

Users	Costing Areas	Only SMS / USSD	Combination	Data only	
350 000	Channel	USSD	R 3.1 mill	R 1.0 mill	
		SMS	R 4.7 mill	R 1.4 mill	
		Data		R 0.3 mill	R 0.5 mill
650 000	Channel	USSD	R 6.4 mill	R 1.5 mill	
		SMS	R 9.8 mill	R 2.2 mill	
		Data		R 0.7 mill	R 1.0 mill
1 000 000	Channel	USSD	R 11.0 mill	R 2.0 mill	
		SMS	R 17.2 mill	R 3.1 mill	
		Data		R 1.2 mill	R 1.6 mill

Users	SMS and USSD	Combination SMS and data	Data Only
350 000	R 7.8 mill	R 2.7 mill	R 0.5 mill
650 000	R 16.2 mill	R 4.4 mill	R 1.0 mill
1 000 000	R 28.2 mill	R 6.3 mill	R 1.6 mill



mHealth security aspects

NDoH is the Accountable Partner for all public medical Information

NDoH required to protect:

- ⇒ Privacy rights
- ⇒ Confidentiality
- ⇒ Information integrity

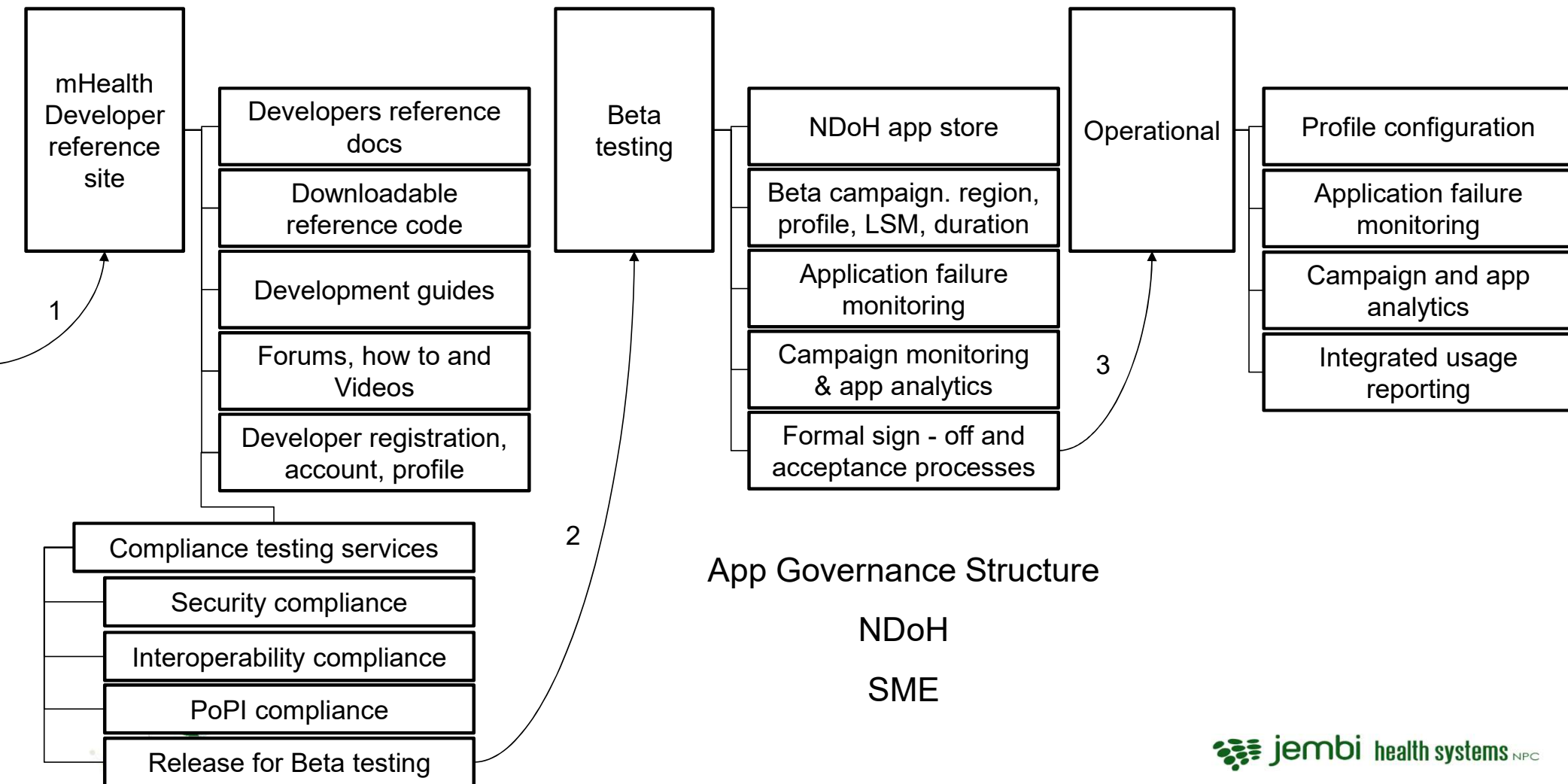
Impact on :

- ⇒ Liability
- ⇒ Trust
- ⇒ Confidence

Framework ensures compliance across mHealth applications



Mobile app life cycle





Thank you

